

RIDGE
EXPLORATION

ASX Announcement

21 October 2008

Significant Potential for Major New Iron Ore Province

Highlights:

- Preliminary field reconnaissance confirms extensive exposure (over 100km) of sedimentary iron ore, with many assays over 40% Iron, and low Phosphorous.
- Beneficiation studies planned
- Project location on northern edge of the Surat Basin adjacent to large developed gas fields, towns, road, rail and other infrastructure
- Potential for local industry integration
- Additional applications lodged to cover extra targets

D'Aguilar Gold Limited (ASX Code: DGR) and its wholly owned subsidiary Ridge Exploration Pty Ltd are pleased to announce the key findings of a six month preliminary study and field reconnaissance program.

Ridge was incorporated to apply for exploration licences for sedimentary iron ore over parts of the northern Surat Basin and other areas where previous work has identified sedimentary iron ore development with over 40% iron content. While over the past 40 years the mining industry has concentrated on the exploitation of haematite ores grading over 55% iron, it has been overlooked that for most of the history of the iron and steel industry (many centuries) iron ore grading 35+% was the accepted standard. These lower grades are still mined throughout North America and Europe. Given that the Ridge target areas are situated adjacent to massive coal and gas fields, and given relatively high prices for iron ore, there is potential for lower than currently used grades of iron ore to be profitably exploited even bearing costs of beneficiation.

The tenements held or applied for by Ridge Exploration and other D'Aguilar Gold subsidiaries including Eastern Uranium and Central Minerals in Southern Queensland are shown on Figure 1. As indicated on the map, these tenements sit astride major existing or planned railway lines with access to several Queensland ports.

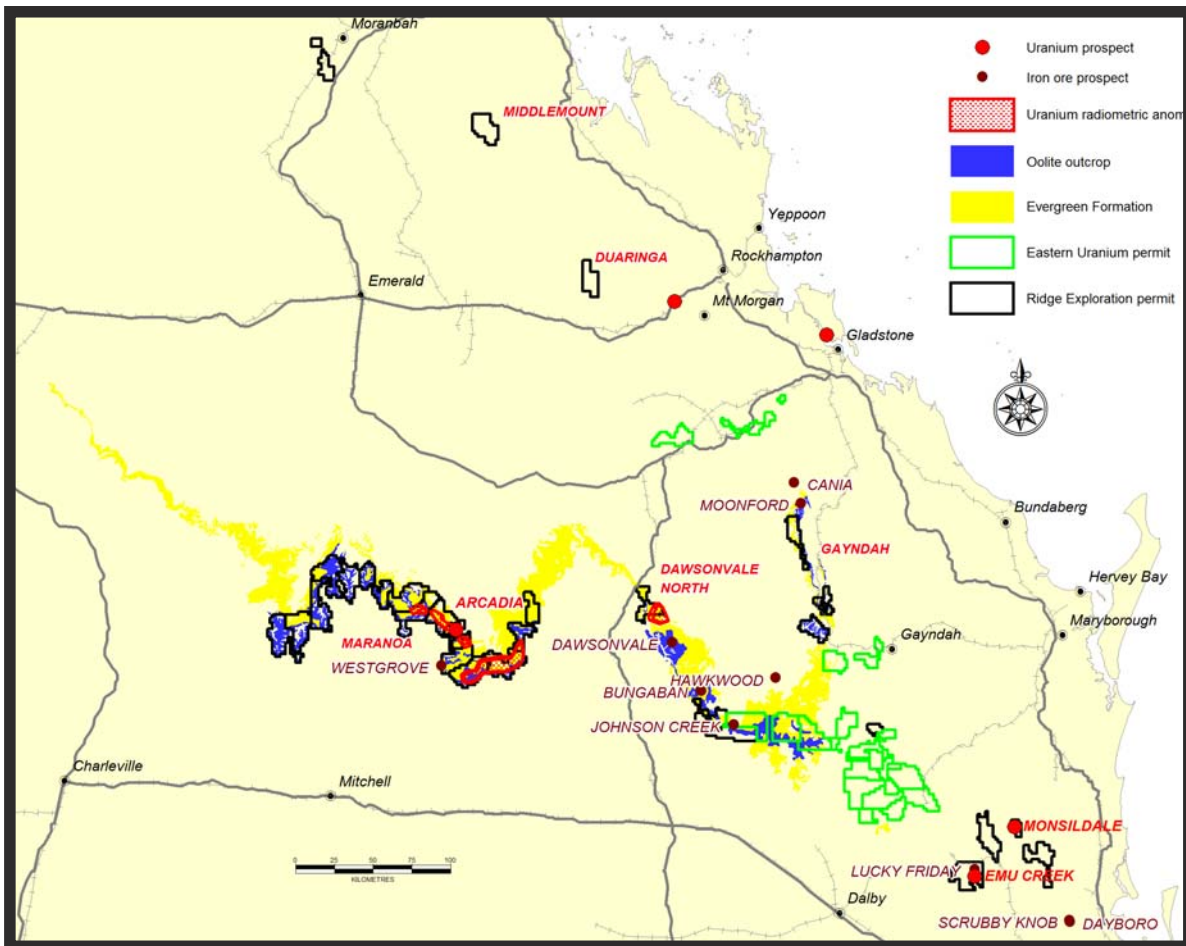


Figure 1: Ridge Exploration and Eastern Uranium Permits in Southern Queensland (both subsidiaries of D’Aguilar Gold Limited)

The main areas of iron potential have been targeted in two related formations. In the central south west of Queensland, the Westgrove Ironstone Member is contained within a sandstone belt starting approximately 100km NNW of Mitchell and snaking for 180km to 45km west of Taroom. In eastern southern Queensland and Central Queensland, the Oolitic Ironstone Member of the Evergreen Formation has been targeted from Taroom, Wandoan, to the Mundubbera, Eidsvold and Monto areas.

Banded and concretionary ironstone beds of the Westgrove Ironstone Member to an indicated thickness of 10m have been located in outcrop extensively across the western exploration areas. The iron content on representative samples of the indicated higher grade beds ranged from 29 – 49%, with many samples over 40%. The phosphorous content ranged from 0.25 to 0.5%.

Exposures of the Oolitic Ironstone Member in the eastern tenements were also extensive, with an inferred thickness of 6 – 10m and a similar range of iron grades to the western tenements. Phosphorous levels were generally lower. The best representative sample graded 49.9% iron and 0.01% phosphorous.

A total of sixteen (16) project areas have been identified for detailed assessment, as shown on Figures 2 and 3. From west to east these are: Mt Owen, Crystalbrook, Darkwater, Ogilvie, Westgrove, Stillwater, Currajong, Mt Rose, Johnson Creek, Cadarga (Eastern Uranium), Koko (Central Minerals), Eidsvold, Abercorn, West Emerald, Denham Range, and Duaringa/Middlemount.

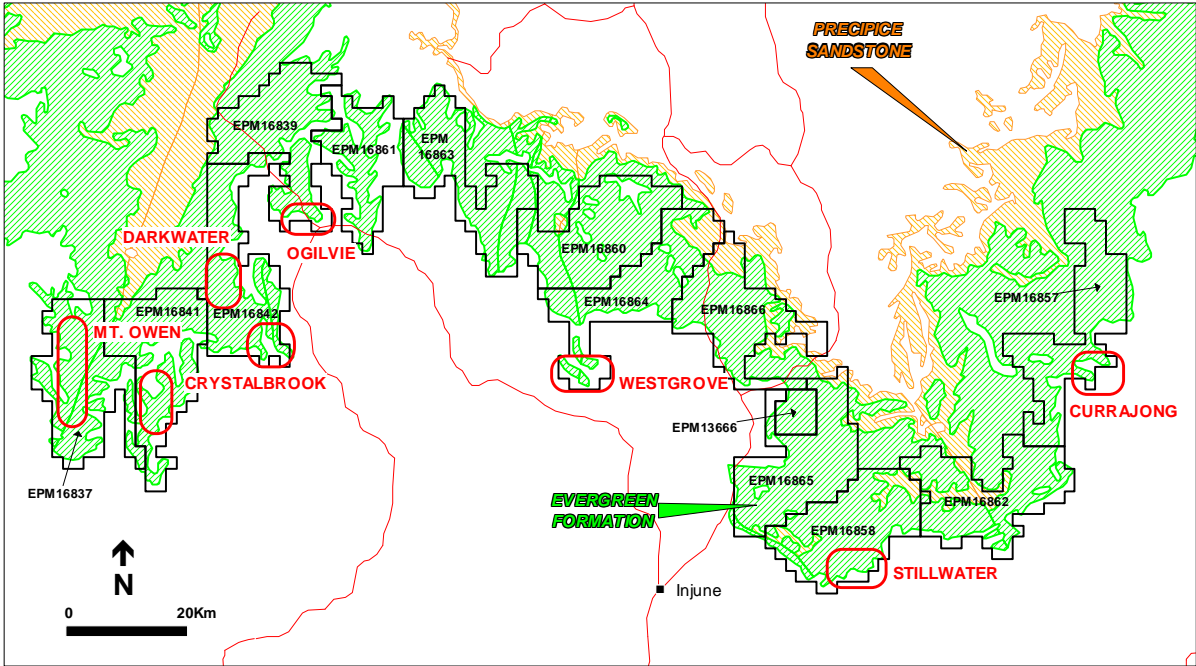


Figure 2: Western tenements and project areas

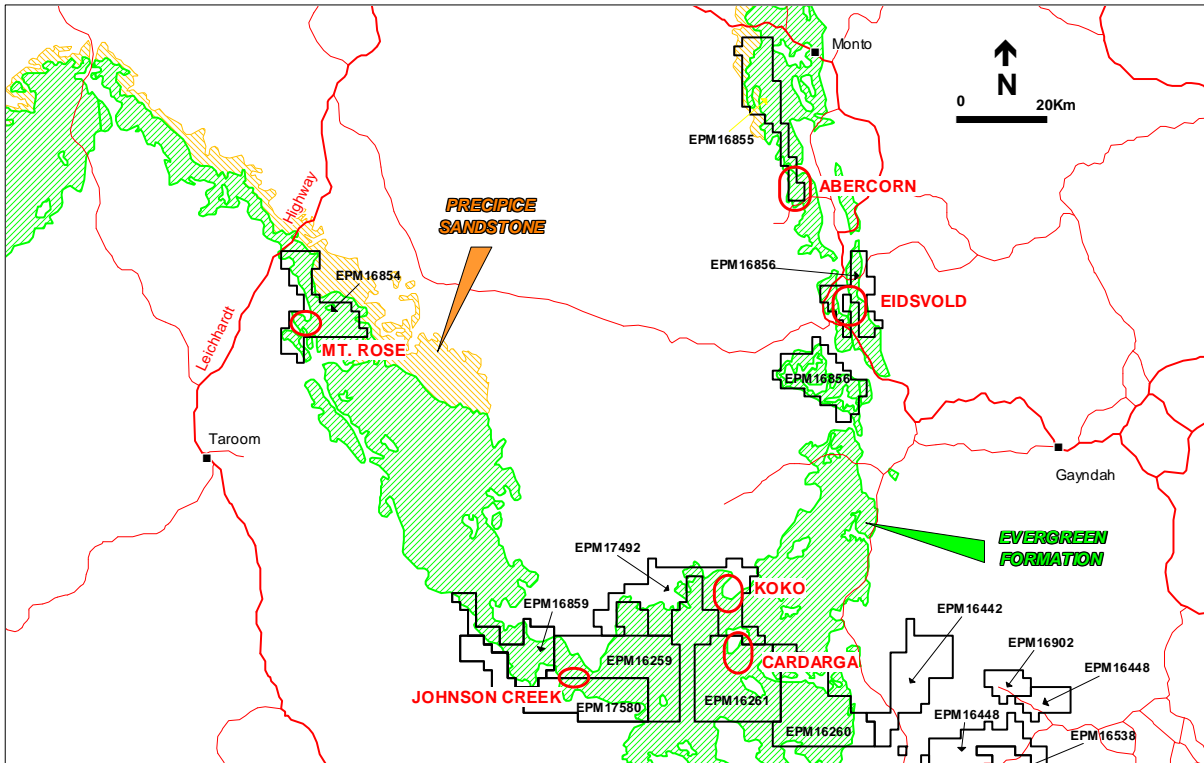


Figure 3: South-Eastern tenements and project areas (see Figure 1 for Central Queensland tenement and project areas)

The following Table 1 and photographs (Figures 4 and 5) illustrate typical assays and exposures across the western area tenements. Table 2 and Figures 6 and 7 show typical assays and exposures in eastern area tenements.

Table 1: Sample Assay Results (Fe, P and Al) – Western End of Maranoa

Sample	EPM	East	North	Lithology	Fe %	P%	Al ₂ O ₃
DR4019	16837	558887	7188631	Ironstone Haematitic	45.2	0.251	5.82
DR4020	16837	558848	7188207	Ironstone Haematitic	47.0	0.432	5.78
DR4021	16837	560455	7184650	Ironstone Haematitic	43.7	0.272	7.55
DR4022	16841	573145	7179889	Ironstone Haematitic	33.5	0.251	5.31
DR4023	16841	571005	7182486	Ironstone Haematitic	28.9	0.254	4.93
DR4024	16837	568216	7185424	Ironstone Haematitic	38.7	0.289	7.80
DR4025	16837	566613	7186235	Ironstone Haematitic	35.5	0.386	6.20
DR4026	16837	564897	7185379	Ironstone Haematitic	40.5	0.272	7.80
DR4027	16837	562877	7183790	Ironstone Haematitic	46.7	0.265	5.12
DR4028	16837	558130	7177785	Ironstone Haematitic	47.0	0.545	6.28
DR4029	16837	560998	7171935	Ironstone Haematitic	42.1	0.445	6.35
DR4030	16837	562249	7171628	Ironstone Haematitic	47.0	0.477	6.01
DR4031	16841	571474	7170365	Ironstone Banded	43.3	0.576	5.83
DR4032	16841	573967	7168666	Ironstone Banded	45.3	0.419	5.59
DR4033	16841	574648	7168689	Ironstone Haematitic	44.3	0.290	6.21



Figure 4: Outcrop of banded haematitic ironstone interbedded with minor sandstone Sample DR 4021, 43.7% Fe, 0.272% P



Figure 5: Outcrop of banded ironstone with interbedded sandstones - Sample DR 4043, 48.9% Fe, 0.410% P, Indicated profile thickness 10 – 12m

Table 2: Sample assay results (Fe, P, Al) – Eastern exposures

Sample	EPM	East	North	Lithology	Fe%	P%	Al ₂ O ₃ %
DR2150	16259	269382	7114915	Vesicular Basalt/Laterite	38.2	0.27	
DR2501	16261	296261	7119235	Ironstone	31.8	0.08	20.2
DR2153	17492	289454	7135695	Vesicular Basalt/Laterite	29.7	0.08	
DR2154	17492	289984	7127907	Vesicular Basalt/Laterite	49.9	0.01	
DR4009	16855	300755	7224727	Haematitic Ironstone	32.9	0.06	18.1
DR4010	16855	301263	7225461	Haematitic Ironstone	35.7	0.02	11.6

**Figure 6: Outcrop of laterite iron – sample DR 2154, 49.9% Fe, 0.01% P**



Figure 7: Extensive outcrop of ironstone 2-3m thick. Sample DR 4010, 35.7% Fe, 0.02% P

As exploration tenements proceed to grant a second phase exploration program will be undertaken on each of the identified project areas. This will include further sampling and mapping of ironstone outcrop and exposure, and collection of representative bulk (20 kg) samples which will be used for initial metallurgical testing to determine the best methods to upgrade ore if required.

On behalf of the Board
DP Cornish
Company Secretary

For further information contact:

Mr Nicholas Mather
Managing Director
Ph: 07 3303 0680 or 0417 880 448

Mr Greg Runge
General Manager
Ph: 07 3303 0680 or 0418 546 739

Email: info@daguilar.com.au

Electronic copies and more information are available on the Company website: www.daguilar.com.au

Competent Persons Statement

The information herein that relates to Exploration Results is based on information compiled by Nicholas Mather B.Sc (Hons) Geol., who is a Member of The Australian Institute of Mining and Metallurgy. Mr Mather is employed by Samuel Holdings Pty Ltd which provides certain consultancy services including the provision of Mr Mather as the Managing Director of D'Aguilar Gold Ltd (and a director of D'Aguilar Gold Ltd's subsidiaries).

Mr Mather has more than five years experience which is relevant to the style of mineralisation and type of deposit being reported and to the activity which he is undertaking to qualify as a Competent Person as defined in the 2004 Edition of the 'Australasian Code for Reporting of Exploration Results, Minerals Resources and Ore Reserves' (the JORC Code). This public report is issued with the prior written consent of the Competent Person(s) as to the form and context in which it appears.