



# Solomon Gold plc

30 November 2011

Solomon Gold Plc  
("Solomon Gold" or the "Company")

## Inferred Resource Estimate at Rannes increased by 20% to 812,000oz of gold equivalent

### Drilling continues to target 2Moz of Gold equivalent

Solomon Gold (AIM Code: SOLG) is pleased to announce a further upgrade of its Inferred resource at its 100% owned Rannes Project in Central Queensland, Australia, from 675,779oz to 812,000oz, representing a 20% increase.

Today's resource estimate upgrade follows on from the Company's statement, dated 29 September 2011, announcing a 24% increase Inferred resource estimate at Rannes.

#### HIGHLIGHTS

- Solomon Gold Inferred mineral resource at Rannes increased by 20%.
- Total Inferred mineral resource estimate upgraded to 25.5Mt at 1.0g/t gold equivalent for 812,307oz of contained gold equivalent (gold to silver ratio of 1 : 40 and a 0.30g/t gold equivalent cut-off grade).
- Inferred mineral resources at Kauffmans Prospect and Crunchie Prospects increased by 102koz and 34koz of contained gold equivalent respectively.
- Drilling at the Rannes Project continues at Kauffmans, Crunchie, Shilo, Double Scoop and Nicks Prospects, with further encouraging results.
- Solomon Gold's total project-to-date discovery cost (Inferred resource ounces) for Rannes is A\$6.70/oz.
- Solomon Gold presenting at upcoming Mines & Money 2011, London.

At the Kauffmans-Homestead Prospect, the Inferred mineral resource estimate has increased to 15.6Mt at 0.8g/t gold equivalent for 416,418oz of contained gold equivalent (326,111oz gold and 3.51Moz silver). The Inferred resource increase is associated with additional deeper resources from a number of good intersections at depth. The mineralisation component remains open at depth, to the north, east and south. Drilling has still only tested to a depth of 240m below surface in the deepest hole.

At the Crunchie Prospect, the Inferred mineral resource estimate is 6.9Mt at 1.5g/t gold equivalent for 335,875oz of contained gold equivalent (106,066oz gold and 9.28Moz silver).



# Solomon Gold plc

The mineralisation remains open at depth and to the north . Drilling has still only tested to a depth of 170m below surface in the deepest hole.

The resources are all close to or at surface which may potentially lead to a low stripping ratio at Rannes.

Commenting on the resource upgrade, Malcolm Norris, Chief Executive of Solomon Gold plc, said: **“The Board is highly encouraged by today’s further resource estimate upgrade. Drilling continues at the Company’s Kauffmans, Crunchie, Shilo, Double Scoop and Nicks Prospects with shallow, percussion drilling and deeper diamond drilling., Exploration also continues at the 21 other nearby prospects, which have been identified in the Rannes Project area, with the aim of delivering the Company’s objective of defining two million ounces of gold equivalent.**

**“The Board is also delighted that Nick Mather, who stepped across from his former role as CEO to Executive Director in October this year, remains fully involved with the day-to-day running of the Company. With Nick’s knowledge and support, the team look forward to driving towards the stated target of 2Moz Gold equivalent in Inferred resources at Rannes, and in contributing to the strategic direction of Solomon Gold and assessing growth opportunities for the Company.”**

Table 1 (below) shows the Inferred Resource estimate for the individual Prospects. Table 2 shows the Inferred Resource estimate for the Company’s total Inferred Resource estimate, both at various gold to silver ratios (30, 40, 50 and 60) and gold equivalent cut-off grades (0.20, 0.25, 0.30, 0.35, 0.40 and 0.50). Table 3 shows a range of gold equivalent values ranging from 60 to 40, based on the 12-month, six-month and three-month average monthly metal prices.

The Rannes Project in Central Queensland, Australia is located approximately 150km west of the major central Queensland port city of Gladstone (Figure 1). The main mineralised trend from Homestead South through Kauffmans to Shilo is 1.6km long and 0.5km wide, and the district includes targets over a 30km strike length (Figure 2).

Figure 3 shows a three-dimensional image of the Kauffmans Prospect and Figure 4 shows the three-dimensional image of the Crunchie Prospect.

The resource estimates were compiled by Neil Schofield of FSSI Consultants (Australia) Pty. Ltd. an independent geological consultancy, and have been classified as Inferred for reporting under the JORC Code for Reporting of Mineral Resources and Ore Reserves widely accepted as a standard for professional reporting purposes.



# Solomon Gold plc

## Qualified Person

Information in this report relating to the exploration results is based on data reviewed by Mr Malcolm Norris (B.Sc. Hons, MSc), the Chief Executive Officer of the Company. Mr Norris is a Fellow of the Australasian Institute of Mining and Metallurgy who has in excess of 25 years' experience in mineral exploration and is a Qualified Person under the AIM Rules. Mr Norris consents to the inclusion of the information in the form and context in which it appears.

By order of the Board  
Karl Schlobohm  
Company Secretary

## Contacts:

**Mr Karl Schlobohm**  
Solomon Gold Plc (Company Secretary)  
kschlobohm@solomongold.com

**Tel: +61 (0)7 3303 0660**

**Mr Ewan Leggat**  
Fairfax I.S. PLC (Broker)  
eleggat@fairfaxis.com

**Tel: +44 (0)207 598 5368**

**Mr Stephen Weir**  
RFC Corporate Finance (Nominated Advisor)  
stephen.weir@rfc.com.au

**Tel: +61 (0)2 9250 0048**

**Mr Dominic Barretto**  
Yellow Jersey PR (PR & IR)  
dominic@yellowjerseypr.com

**Tel: +44 (0)7769 537 739**

## NOTES TO EDITORS

Solomon Gold Plc's original gold exploration projects are located on Guadalcanal Island, Solomon Islands. The Company holds a comprehensive and extensive tenement position on the main island of Guadalcanal where its JV partner, NVL Solomon Islands Limited (a subsidiary of NYSE-listed Newmont Mining Corporation) can earn a 70% interest in the project by expending US\$12 million by 4 March 2014. The GJV has outlined high priority gold-copper porphyry targets at Chikora, Mbetilonga, and Kuma.

Solomon Gold is also exploring for gold on Fauro Island, Solomon Islands, just south east of Bougainville Island in neighbouring Papua New Guinea.

Solomon Gold has extended its strategy to aim at becoming an integrated gold explorer, developer and miner with projects in lower risk areas as well as the Solomon Islands.



# Solomon Gold plc

Solomon Gold's projects in Queensland include Rannes, Mt Perry and Normanby. At Rannes, the Company has outlined a 30km long prospective zone in a 200km long trend on the eastern edge of Queensland's Bowen Basin in the same regional geological setting as Newcrest's 100,000 ounce per year Cracow Gold Mine. This extensive exploration licence position hosts several mineralised projects including Rannes. The exploration area is believed to host mineral systems which are geologically similar to the Carlin trend in Nevada USA. At Rannes, the Company has encountered potentially economic mineralisation in five different prospects targeted to yield at least 2 Moz. The total Solomon Gold Inferred Mineral Resource estimate following the continued work at its Rannes Projects, Crunchie, Kauffmans-Homestead, Brother and Cracklin Rosie Prospect is 25.5Mt at 1.0g/t gold equivalent for 812,307oz of contained gold equivalent (486,935oz gold and 13.01Moz silver), based on a gold to silver ratio of 1 : 40 and a 0.30g/t gold equivalent cut-off grade.

At Mt Perry, the Company is investigating an area of approximately 1,500km<sup>2</sup> hosting over 50 historic mines and workings near Newcrest's Mt Rawdon Gold Mine. Mt Perry has yielded potentially economic drill intersections on nine of the ten prospects tested to date.

Solomon Gold's Board includes accomplished professionals with strong track records in the areas of exploration, mine development in Australia and Melanesia, investment, finance and law. Board and Management have significantly vested interests in the Company holding approximately 17.5% of its issued share capital.

Solomon Gold is based in Brisbane, Queensland, Australia. The Company listed on London's Alternative Investment Market in 2006, under the AIM Code 'SOLG' and currently has 284,623,489 shares on issue and 11,264,000 options exercisable at 50p on issue. Further details concerning the Company's key projects and personnel can be found at [www.solomongold.com](http://www.solomongold.com).

APPENDIX

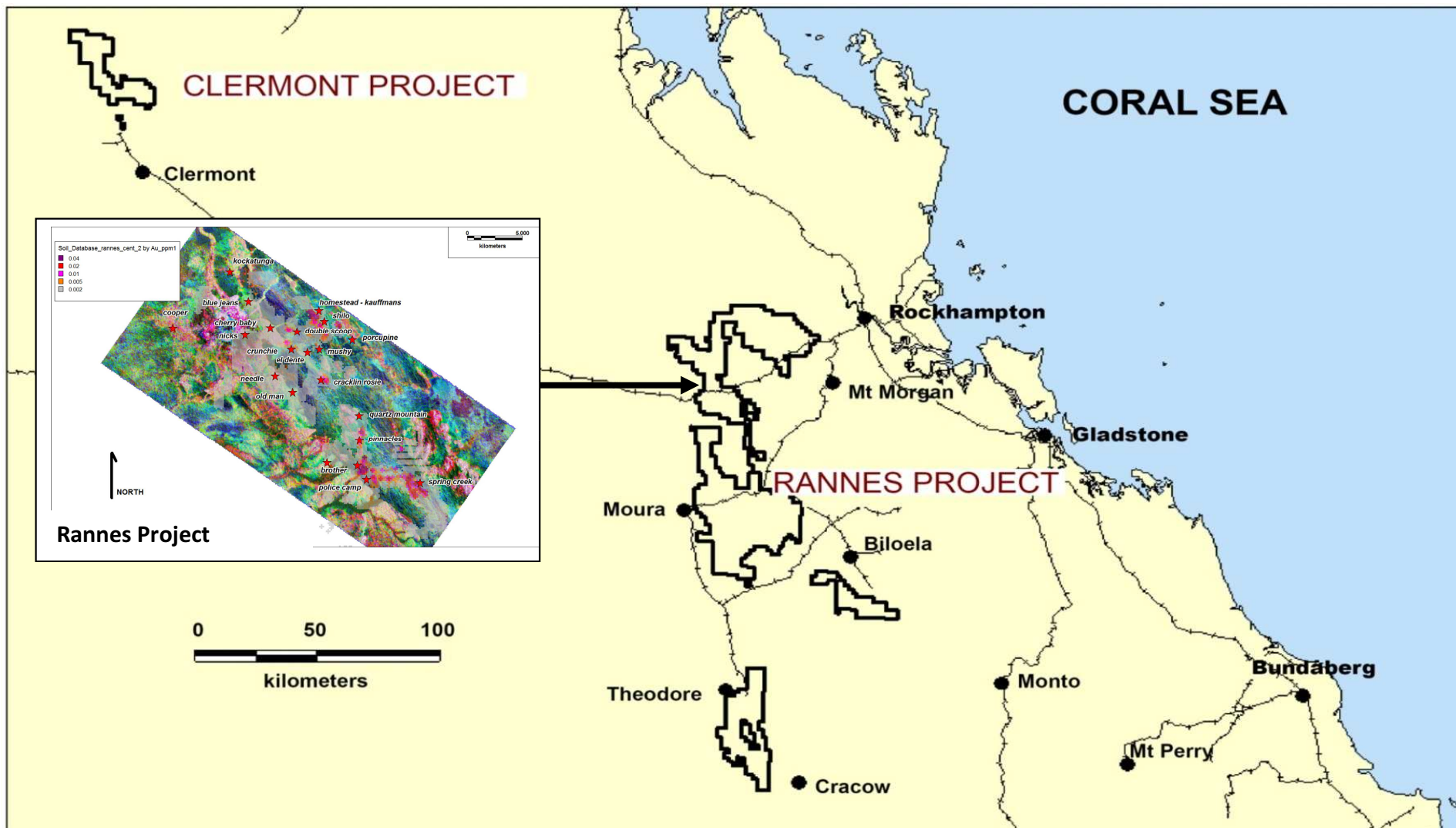


Figure 1: Location of the Rannes Project

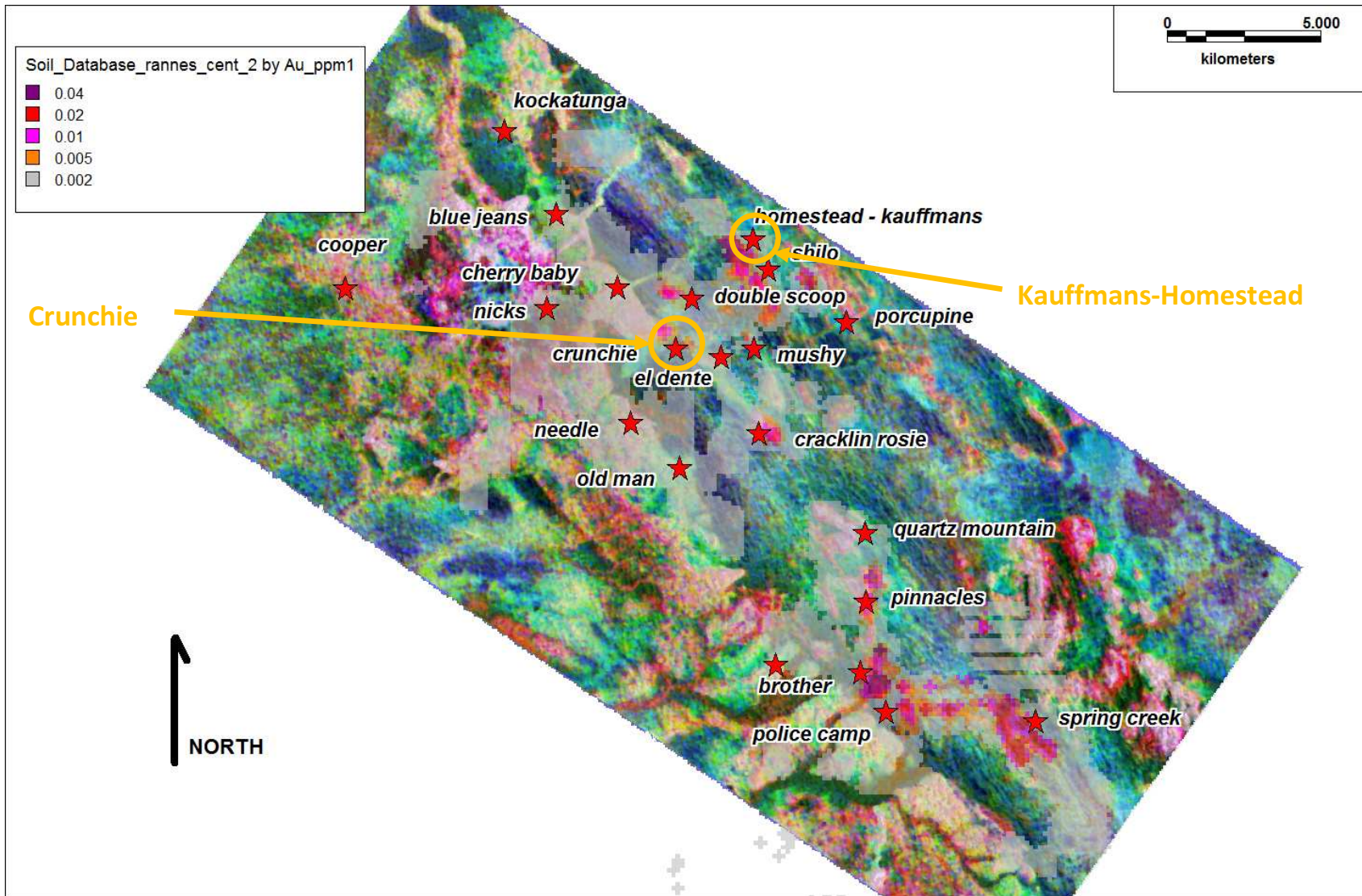


Figure 2: Rannes Prospects (over gold soil anomalies on potassium radiometric background)

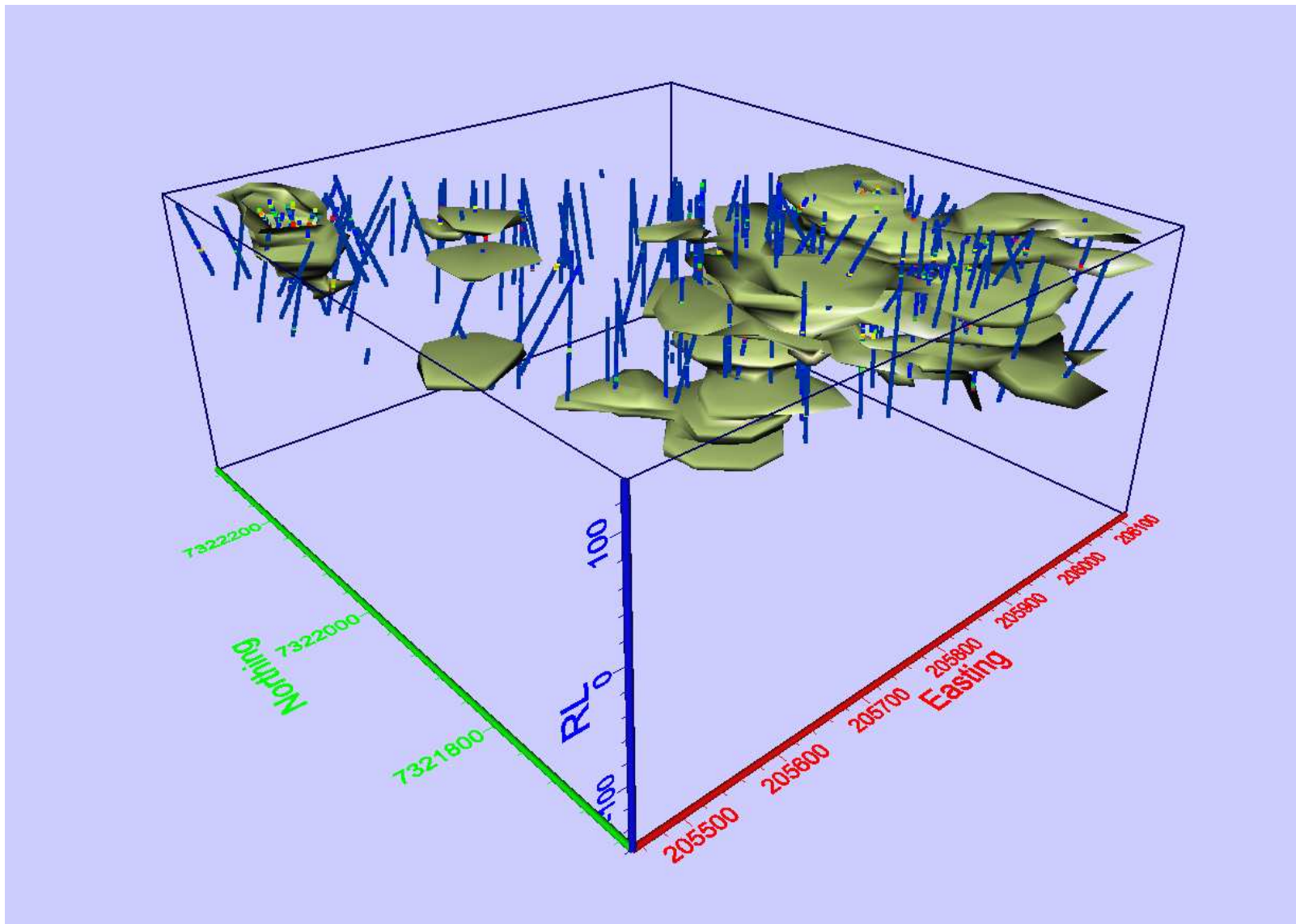


Figure 3: Three-dimensional image of the Kauffmans-Homestead Prospect

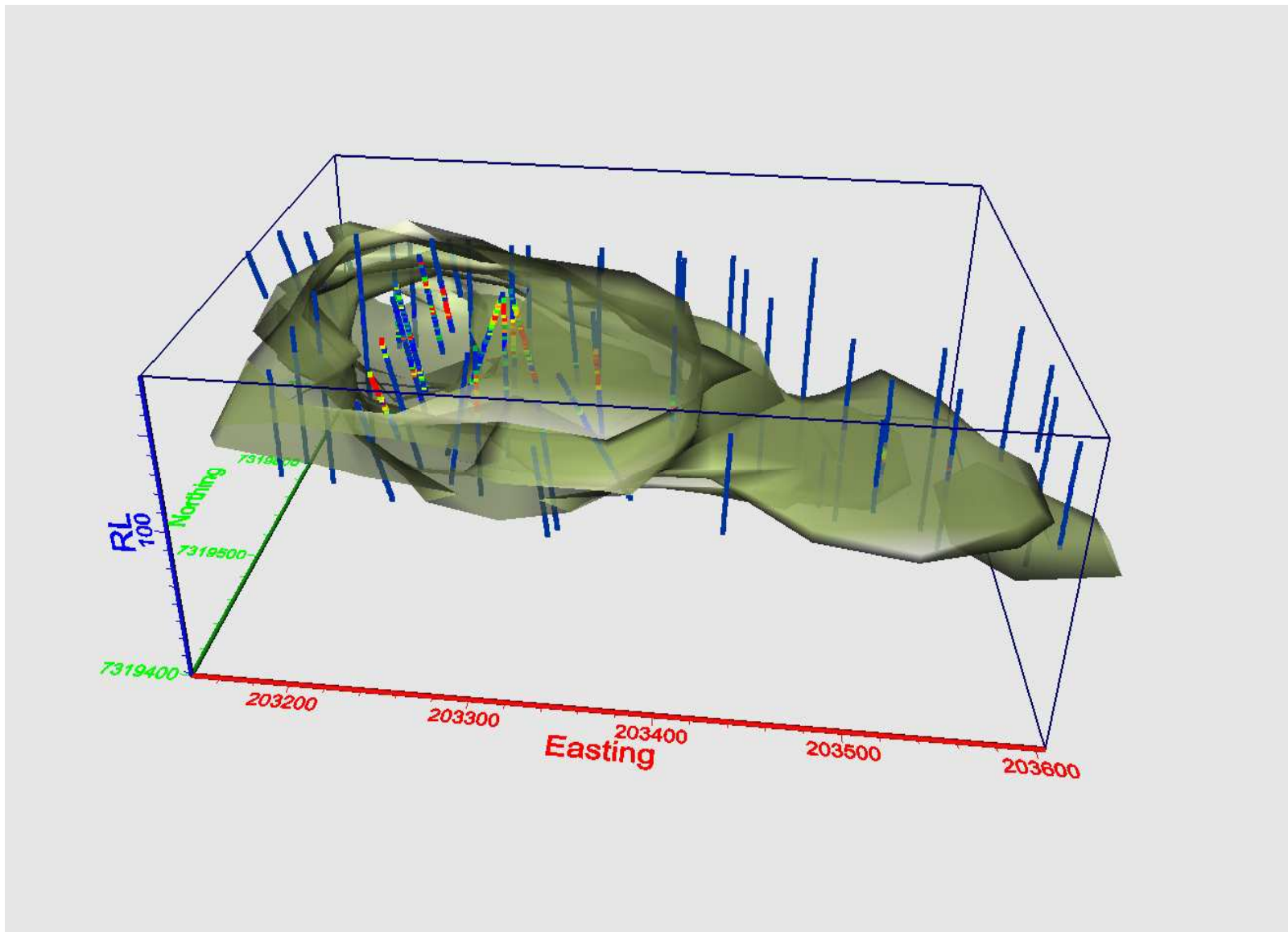


Figure 4: Three-dimensional image of the Crunchie Prospect

**Table 1: Inferred Resource Estimate for the individual Prospects**

Crunchie Deposit Inferred Resource						Kauffman – Homestead Inferred Resource						Brother Inferred Resource						Cracklin Rosie Inferred Resource										
Cut-Off	Tonnage	Eq. Au	Au	Ag	Contained	Tonnage	Eq. Au	Au	Ag	Contained	Tonnage	Eq. Au	Au	Ag	Contained	Tonnage	Eq. Au	Au	Ag	Contained	Tonnage	Eq. Au	Au	Ag	Contained			
g/t	Mt	g/t	g/t	g/t	Eq. Au oz	Au oz	Ag oz	Mt	g/t	g/t	g/t	Eq. Au oz	Au oz	Ag oz	Mt	g/t	g/t	g/t	Eq. Au oz	Au oz	Ag oz	Mt	g/t	g/t	g/t	Eq. Au oz	Au oz	Ag oz
<i>Gold : Silver :: 30 : 1</i>																												
<b>0.20</b>	8.0	1.7	0.6	37.0	426,296	144,682	9,599,372	23.2	0.7	0.6	6.0	515,331	448,114	4,481,137	3.4	0.5	0.6	0.7	49,697	67,367	77,306	1.6	0.6	0.6	4.0	29,761	28,717	208,850
<b>0.25</b>	7.6	1.7	0.6	39.0	424,487	141,496	9,514,362	19.9	0.8	0.6	6.0	486,733	409,880	3,842,628	2.6	0.5	0.7	0.7	43,384	55,064	58,401	1.3	0.6	0.6	5.0	27,552	26,200	215,248
<b>0.30</b>	7.2	1.8	0.6	41.0	419,800	134,522	9,509,282	17.2	0.8	0.7	7.0	463,403	375,136	3,861,693	2.0	0.6	0.7	0.7	38,507	46,991	45,686	1.2	0.7	0.7	5.0	26,089	24,551	185,991
<b>0.35</b>	6.9	1.9	0.6	42.0	416,210	130,619	9,298,310	15.0	0.9	0.7	8.0	443,559	347,133	3,857,081	1.6	0.7	0.8	0.7	34,015	39,684	36,076	1.1	0.7	0.7	5.0	24,981	22,955	168,790
<b>0.40</b>	6.6	2.0	0.6	44.0	411,959	126,757	9,295,481	13.2	1.0	0.8	8.0	420,238	318,362	3,395,864	1.3	0.7	0.8	0.7	29,787	33,007	28,177	0.9	0.8	0.7	5.0	23,573	21,457	151,107
<b>0.50</b>	6.0	2.1	0.6	47.0	404,041	119,859	9,086,085	10.4	1.1	0.8	9.0	381,103	277,470	3,008,708	0.9	0.9	0.9	0.8	24,501	25,058	22,274	0.7	0.9	0.8	6.0	19,965	17,303	133,103
<i>Gold : Silver :: 40 : 1</i>																												
<b>0.20</b>	7.8	1.4	0.4	38.0	344,870	107,460	9,496,422	21.6	0.7	0.5	6.0	465,885	361,583	4,172,106	3.3	0.4	0.4	0.6	46,881	44,750	63,928	1.5	0.6	0.5	5.0	27,356	21,696	235,824
<b>0.25</b>	7.3	1.5	0.5	40.0	339,800	107,799	9,373,800	18.3	0.8	0.6	7.0	440,856	346,806	4,114,653	2.5	0.5	0.5	0.7	40,779	39,979	55,971	1.2	0.6	0.5	5.0	25,700	20,480	200,780
<b>0.30</b>	<b>6.9</b>	<b>1.5</b>	<b>0.5</b>	<b>42.0</b>	<b>335,875</b>	<b>106,066</b>	<b>9,280,756</b>	<b>15.6</b>	<b>0.8</b>	<b>0.7</b>	<b>7.0</b>	<b>416,418</b>	<b>326,111</b>	<b>3,511,960</b>	<b>1.9</b>	<b>0.6</b>	<b>0.6</b>	<b>0.7</b>	<b>35,747</b>	<b>35,131</b>	<b>43,143</b>	<b>1.1</b>	<b>0.7</b>	<b>0.6</b>	<b>5.0</b>	<b>24,267</b>	<b>19,628</b>	<b>178,435</b>
<b>0.35</b>	6.5	1.6	0.5	44.0	331,866	104,361	9,183,726	13.6	0.9	0.7	8.0	396,929	314,054	3,489,487	1.5	0.7	0.6	0.7	31,511	30,556	33,420	1.0	0.7	0.6	5.0	23,148	18,969	160,753
<b>0.40</b>	6.2	1.7	0.5	46.0	328,278	102,834	9,096,855	11.9	1.0	0.8	8.0	379,338	298,872	3,065,357	1.1	0.7	0.7	0.7	27,336	26,597	25,859	0.9	0.8	0.6	6.0	21,692	17,799	166,861
<b>0.50</b>	5.6	1.8	0.6	49.0	320,435	102,038	8,771,685	9.4	1.1	0.9	9.0	340,413	274,138	2,711,252	0.8	0.9	0.9	0.8	22,461	21,944	20,653	0.6	0.9	0.8	6.0	18,200	15,167	121,336
<i>Gold : Silver :: 50 : 1</i>																												
<b>0.20</b>	7.4	1.3	0.5	39.0	297,915	109,633	9,294,935	20.6	0.7	0.5	6.0	437,840	351,599	3,980,361	3.2	0.5	0.4	0.7	46,528	45,494	72,377	1.5	0.6	0.5	4.0	25,746	21,533	187,245
<b>0.25</b>	6.9	1.3	0.5	42.0	293,506	108,953	9,338,820	17.2	0.7	0.6	7.0	410,020	337,990	3,878,572	2.4	0.5	0.5	0.7	41,577	40,008	54,913	1.3	0.6	0.5	5.0	24,383	20,725	203,191
<b>0.30</b>	6.5	1.4	0.5	44.0	288,469	105,841	9,131,385	14.7	0.8	0.7	7.0	387,964	321,726	3,311,887	1.9	0.6	0.6	0.7	36,534	35,915	43,345	1.1	0.6	0.5	5.0	23,334	19,688	182,293
<b>0.35</b>	6.0	1.5	0.5	46.0	285,741	104,966	8,941,568	12.7	0.9	0.8	8.0	368,001	306,668	3,271,120	1.5	0.7	0.7	0.7	32,338	31,848	34,298	1.0	0.7	0.6	5.0	21,994	18,759	161,717
<b>0.40</b>	5.7	1.5	0.6	48.0	280,040	104,329	8,785,574	11.2	1.0	0.8	8.0	351,529	290,550	2,889,625	1.2	0.7	0.7	0.7	28,383	28,000	26,849	0.9	0.7	0.6	5.0	20,067	17,318	137,443
<b>0.50</b>	5.1	1.7	0.6	52.0	272,537	102,813	8,486,189	8.7	1.1	1.0	9.0	315,745	265,449	2,514,780	0.8	0.9	0.9	0.8	23,384	23,115	21,502	0.6	0.9	0.8	6.0	16,195	13,961	111,691
<i>Gold : Silver :: 60 : 1</i>																												
<b>0.20</b>	7.0	1.2	0.5	41.0	262,218	105,244	9,268,057	19.3	0.7	0.6	7.0	428,259	359,986	4,344,668	3.4	0.4	0.4	0.6	45,411	44,330	64,873	1.4	0.6	0.5	5.0	25,584	21,929	228,429
<b>0.25</b>	6.5	1.2	0.5	44.0	259,492	106,726	9,207,775	16.2	0.8	0.7	7.0	406,028	338,357	3,643,841	2.5	0.5	0.5	0.6	39,105	38,291	48,882	1.2	0.6	0.5	5.0	24,119	21,007	194,511
<b>0.30</b>	6.0	1.3	0.5	47.0	255,778	104,636	9,107,240	13.9	0.9	0.7	8.0	383,166	325,245	3,564,333	2.0	0.6	0.5	0.6	34,605	33,976	37,751	1.1	0.7	0.6	5.0	23,049	19,953	172,005
<b>0.35</b>	5.6	1.4	0.6	49.0	250,796	102,844	8,841,002	12.0	0.9	0.8	8.0	363,625	309,468	3,094,679	1.5	0.6	0.6	0.6	30,104	29,611	29,611	0.9	0.7	0.6	5.0	21,571	18,837	151,911
<b>0.40</b>	5.3	1.5	0.6	51.0	246,762	101,409	8,619,774	10.5	1.0	0.9	9.0	345,578	294,758	3,049,218	1.2	0.7	0.7	0.6	25,784	25,400	23,090	0.8	0.8	0.7	6.0	20,012	17,642	157,988
<b>0.50</b>	4.7	1.6	0.7	55.0	238,369	98,946	8,245,478	8.2	1.2	1.0	10.0	315,370	270,317	2,650,166	0.8	0.8	0.8	0.7	20,243	19,987	17,937	0.6	0.9	0.8	6.0	16,638	14,789	110,919

**Table 2: Solomon Gold Inferred Resource Estimate**

Cut-Off	Tonnage	Equ Au	Au	Ag	Contained		
					Equ. Au	Au	Ag
g/t	Mt	g/t	g/t	g/t	oz	oz	oz
<b>Gold : Silver :: 30 : 1</b>							
<b>0.20</b>	36.3	0.9	0.6	12.3	1,021,085	688,879	14,326,665
<b>0.25</b>	31.4	1.0	0.6	13.5	982,155	632,700	13,630,639
<b>0.30</b>	27.6	1.1	0.7	15.4	947,749	581,199	13,602,651
<b>0.35</b>	24.5	1.2	0.7	16.9	918,764	540,391	13,360,208
<b>0.40</b>	22.0	1.3	0.7	18.2	885,557	499,583	12,870,630
<b>0.50</b>	18.0	1.4	0.8	21.2	829,611	439,690	12,250,170
<b>Gold : Silver :: 40 : 1</b>							
<b>0.20</b>	34.2	0.8	0.5	12.7	884,991	535,487	13,968,280
<b>0.25</b>	29.3	0.9	0.5	14.6	847,134	515,064	13,745,204
<b>0.30</b>	<b>25.5</b>	<b>1.0</b>	<b>0.6</b>	<b>15.9</b>	<b>812,307</b>	<b>486,935</b>	<b>13,014,294</b>
<b>0.35</b>	22.5	1.1	0.6	17.8	783,455	467,939	12,867,386
<b>0.40</b>	20.1	1.2	0.7	19.1	756,644	446,102	12,354,932
<b>0.50</b>	16.4	1.3	0.8	22.1	701,509	413,287	11,624,926
<b>Gold : Silver :: 50 : 1</b>							
<b>0.20</b>	32.7	0.8	0.5	12.9	808,029	528,258	13,534,917
<b>0.25</b>	27.9	0.9	0.6	15.0	769,486	507,676	13,475,496
<b>0.30</b>	24.2	0.9	0.6	16.3	736,300	483,170	12,668,911
<b>0.35</b>	21.3	1.0	0.7	18.1	708,074	462,241	12,408,704
<b>0.40</b>	18.9	1.1	0.7	19.5	680,019	440,196	11,819,492
<b>0.50</b>	15.2	1.3	0.8	22.8	627,861	405,339	11,134,162
<b>Gold : Silver :: 60 : 1</b>							
<b>0.20</b>	31.1	0.8	0.5	13.9	761,473	532,489	13,906,017
<b>0.25</b>	26.4	0.9	0.6	15.4	728,744	504,381	13,095,008
<b>0.30</b>	22.9	0.9	0.7	17.5	696,597	483,810	12,881,329
<b>0.35</b>	20.1	1.0	0.7	18.7	666,096	460,760	12,117,202
<b>0.40</b>	17.8	1.1	0.8	20.7	638,136	439,208	11,850,070
<b>0.50</b>	14.3	1.3	0.9	24.0	590,620	404,039	11,024,500

**Table 3: Gold Equivalent**

	<b>2010</b>	<b>12-month</b>	<b>6-month</b>	<b>3-month</b>
	US\$/oz	<b>Average</b>	<b>Average</b>	<b>Average</b>
	US\$/oz	US\$/oz	US\$/oz	US\$/oz
Gold	1,224.53	1,516.02	1,634.14	1,730.97
Silver	20.19	34.48	36.81	36.81
Gold : Silver Ratio	60.64	43.97	44.39	47.03

*The metal prices utilised are based on the average monthly gold and silver prices for the London PM fix of both metals from 1 November 2010 to 31 October 2011.*