

# Sutakiki Discovery

## an exciting gold over-printed porphyry system

Discovery of a very large gold rich mineral system at Sutakiki and Koloula

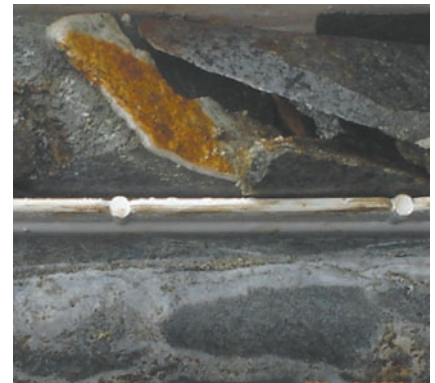


Aggressive 10km  
3 rig  
2 year drilling  
program underway

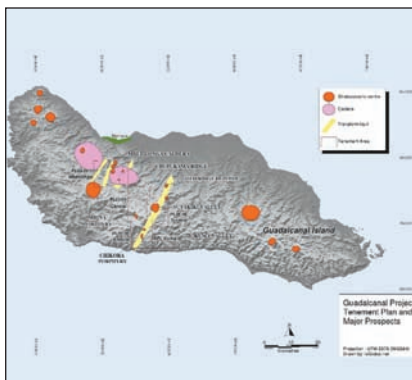
Formalised access agreements in place



Discovery outcrop:  
Porphyry 0.85 g/t gold  
Overprinted vein system  
averages 7.5 g/t gold



Fully  
operational base.  
Seven expat and  
local geoscientists



Defined 4km<sup>2</sup>  
mineralised intrusion  
750 x 500m potassic  
dome, breccias  
and veining



# Solomon Gold plc

**For more information contact:**

Nicholas Mather (Chief Executive Officer) at the Australian office +61 417 880 448  
**Registered Office** 7 Pilgrim Street London EC4V 6LB UK Registered Number 5449516  
**Australian Office** Level 5, 60 Edward Street, Brisbane QLD 4000  
Phone: +61 7 3303 0660 Fax +61 7 3303 0681 info@solomongold.com

www.solomongold.com LSE AIM: SOLG